



43 Groveside

, Henlow, SG16 6AR

Guide price £375,000



43 Groveside

, Henlow, SG16 6AR

Guide price £375,000 to £385,000

Located in Henlow village is this extended, three double bedroom, terraced home.

Step inside an entrance hall and through to a welcoming open-plan lounge and dining room, where a box bay window floods the space with natural light. At the heart of the room is a charming fireplace with a brick surround and log burner, perfect for cosy evenings when the evenings turn cool. Beyond this is a dedicated dining area, ideal for entertaining family and friends.

The kitchen is part of the extension and has been finished with classic sage green cabinets, complimentary tiles and black worktops. There is a four-ring gas hob, fan oven with extractor fan, and space for a dishwasher and large fridge freezer. Adjacent to the dining area is a practical utility room and WC.

Upstairs, there are three double bedrooms. Bedroom one has a stylish panelled feature wall, with a built-in wardrobe and air conditioning. Bedroom two also benefits from air conditioning. Completing the accommodation is a contemporary three-piece family bathroom, fitted with an electric shower over the bath.

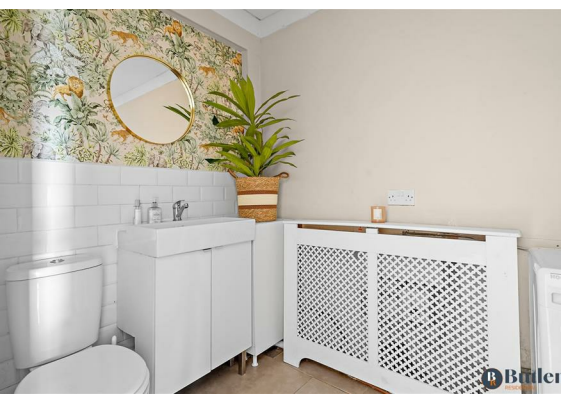
The east-facing garden is a true highlight of the property, extending to approximately 100 feet in length. It offers a patio area for outdoor seating, a well-maintained lawn, and raised sleeper borders planted with established shrubs.



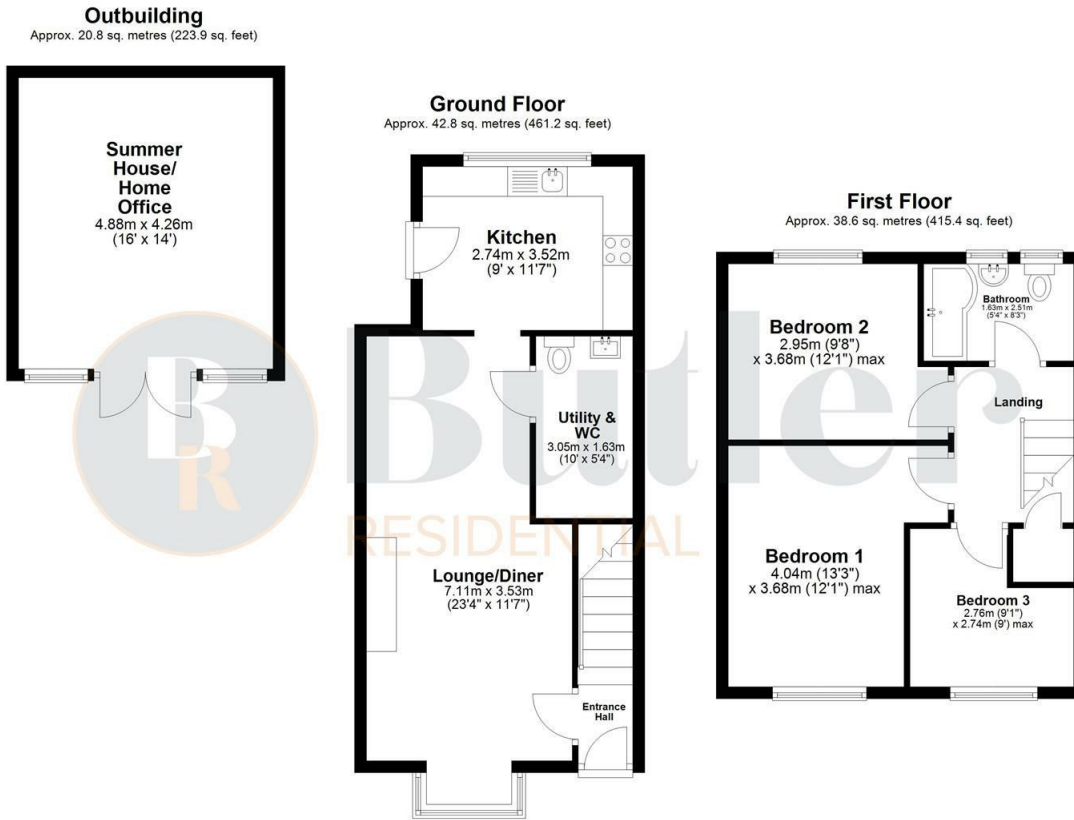


To the rear, a decked seating area provides the perfect spot to relax, while a substantial summer house with power and lighting, currently used as a home office, adds further versatility. Behind the summer house is a handy garden shed. To the front is a further lawned garden, and on-street parking.

Location



Floor Plan



Total area: approx. 102.2 sq. metres (1100.5 sq. feet)

Viewing

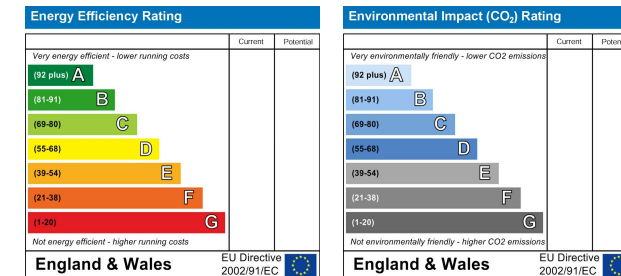
Please contact us on 01438 584400 if you wish to arrange a viewing appointment for this property or require further information.

These particulars, whilst believed to be accurate are set out as a general outline only for guidance and do not constitute any part of an offer or contract. Intending purchasers should not rely on them as statements of representation of fact, but must satisfy themselves by inspection or otherwise as to their accuracy. No person in this firm's employment has the authority to make or give any representation or warranty in respect of the property.

Area Map



Energy Efficiency Graph



Address: Suite 2, First Floor, Unit B, Balbir House Norton Green Road, Stevenage, SG1 2LP

Tel: 01438 584400

Email: hello@butlerresidential.co.uk



butlerresidential.co.uk